

# BAPTIST RETIREMENT COMMUNITIES OF GEORGIA

Baptist Retirement Communities of Georgia began with the gift of the Winecoff Hotel on Peachtree Street, Atlanta, Georgia. Since its conception the Ministry has had a clear mission:

*“To provide comfortable, attractive homes and services for senior adults at an affordable price enabling them to age in place in these homes within a Christian environment.”*

For nearly four decades, hundreds of families have been blessed by this ministry. Today, there are three modern communities in the metro Atlanta area. Palmetto Park is nestled in South Fulton County appeals to seniors seeking a quiet retreat with the close convenience of city living. **Clairmont Crest**, in Decatur, offers high rise senior living in an urban setting. **Hiawasse** **Park** offers mountain views far from the busy Atlanta life.



**Baptist Retirement**  
COMMUNITIES OF GEORGIA, INC.



**Schedule A Tour Today!**

**Hiawassee Park Senior Living**

**89 Hiawassee Park**

**Hiawassee, Georgia 30546**

**762.500.2021**

**Peggy Beckett**

President/CEO, BRCGA

[pbeckett@brcga.org](mailto:pbeckett@brcga.org)

**Shannon Watson**

Senior Executive Director, Hiawassee Park

[swatson@brcga.org](mailto:swatson@brcga.org)

[www.brcga.org](http://www.brcga.org)

**Hiawassee Park**  
SENIOR LIVING  
COMMUNITY  
*We put the heart in senior living*



*A Beautiful Place to Call Home*

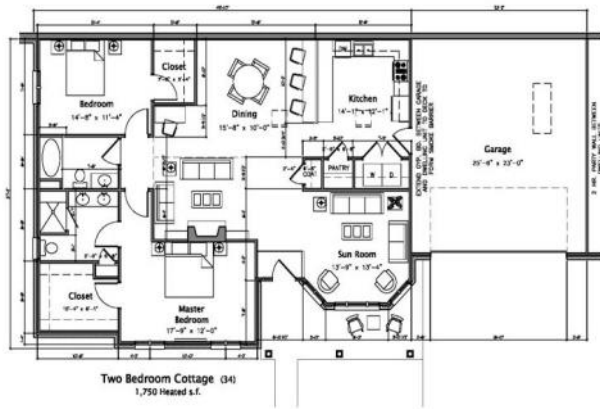
**89 Hiawassee Park**

**Hiawassee, Georgia 30546**

**762.500.2021**

[www.brcga.org](http://www.brcga.org)

## COTTAGE FLOORPLAN



## COTTAGE FEATURES

- Two Bedrooms
- Vaulted Ceilings
- Sunroom
- Granite Countertops
- Tray Ceilings in Master Bedroom
- Skylights in Living/Dining Areas
- Two Car Garage
- Attic Storage with Pull-Down Stairs
- The Lodge—apartments to be added in the future that will feature a dining room with optional meal plans.
- On-Site Home Care



## HIAWASSEE PARK

A lovely cottage neighborhood in a senior living community sponsored by Baptist Retirement Communities of Georgia, Inc., Hiawassee Park offers a sense of security and comfort. Our community is nestled in a natural setting which features walking trails, a gazebo, & meditation gardens that encourage residents to enjoy the great outdoors. Opportunities for socialization with persons of a like mindset abound.

### STRESS-FREE ENVIRONMENT

- No Large Buy-In Fee
- No Home Owners Insurance Needed
- No Property Taxes
- \$1000 Entrance Fee
- \$2300 Month-to-Month Rent
- Maintenance and Landscaping Included
- Refuse Pick-Up Included
- Water Included

*On-Site Home Care available through...*



## LOOKOUT POINT PARK



## CLUBHOUSE

- On & Off Site Events Planned by Lifestyles Director
- Fully Equipped Kitchen
- Tables & Seating Arrangements for Meals, Games, and Socialization
- Large Screen TV
- Beautiful Stone Fireplace
- Computer Room with Wi-Fi
- Arts & Crafts Area
- Fully Equipped Exercise Room
- Resistance Pool with Retractable Treadmill for No-Impact Aqua Therapy
- Storage, pull down steps for easy access